

RG-RCMS

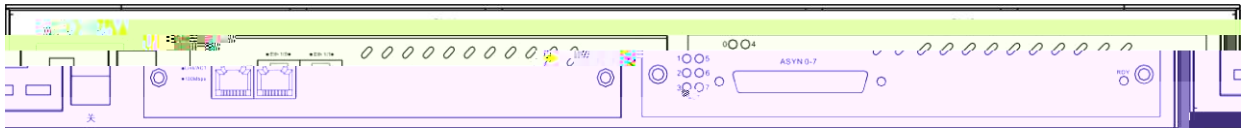
1.1 RCMS

RCMS RACK Control & Management Server

RCMS RCMS-8 RCMS-16



RCMS



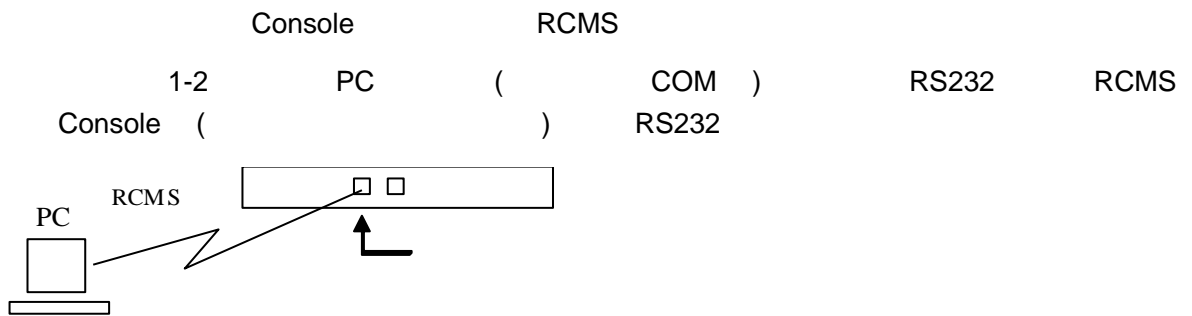
RCMS-8

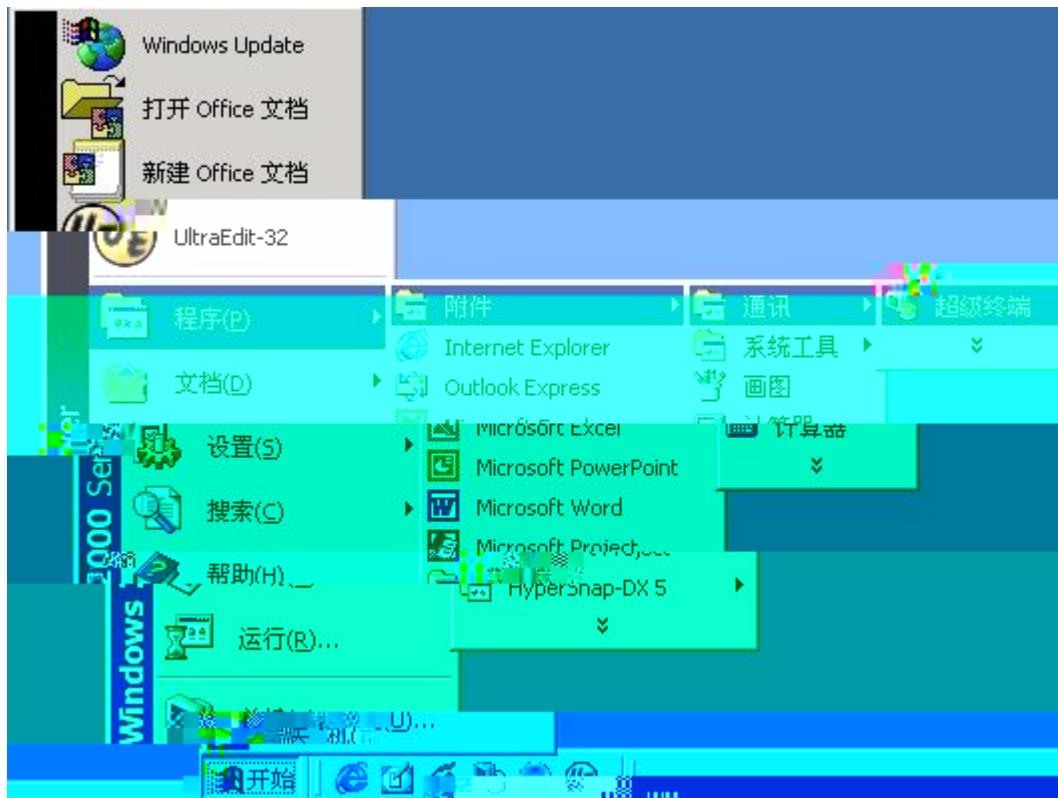


RCMS-16

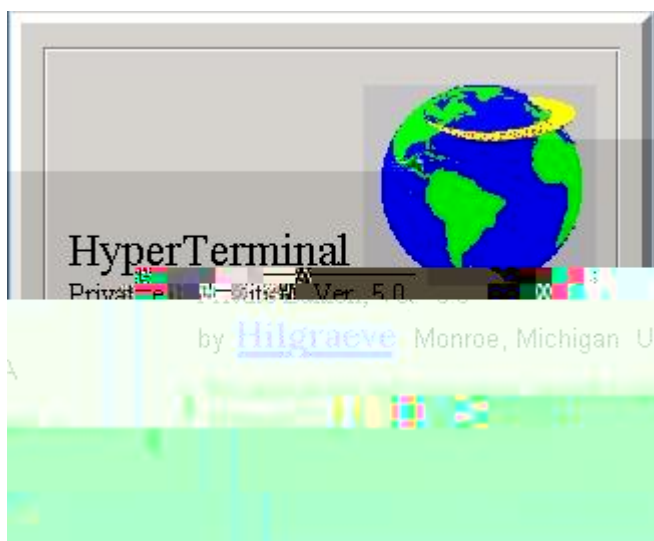
1-1 RCMS RCMS-8, RCMS-16

1.2

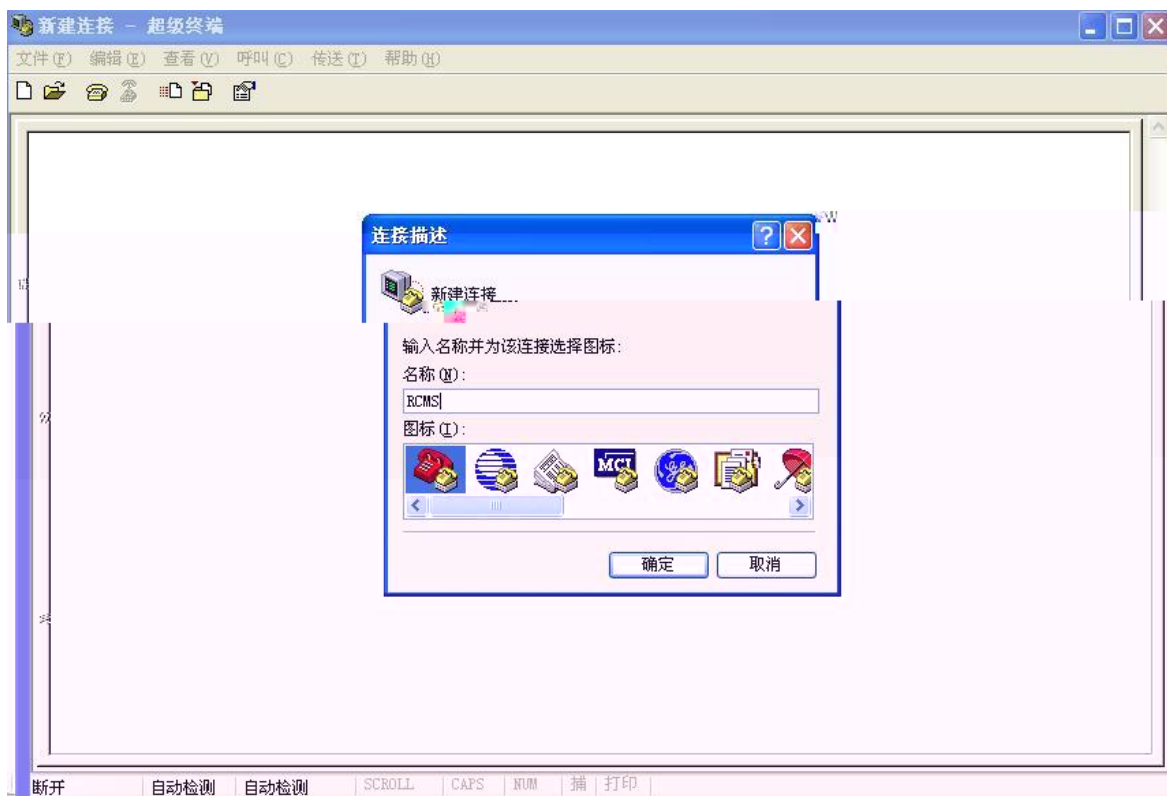




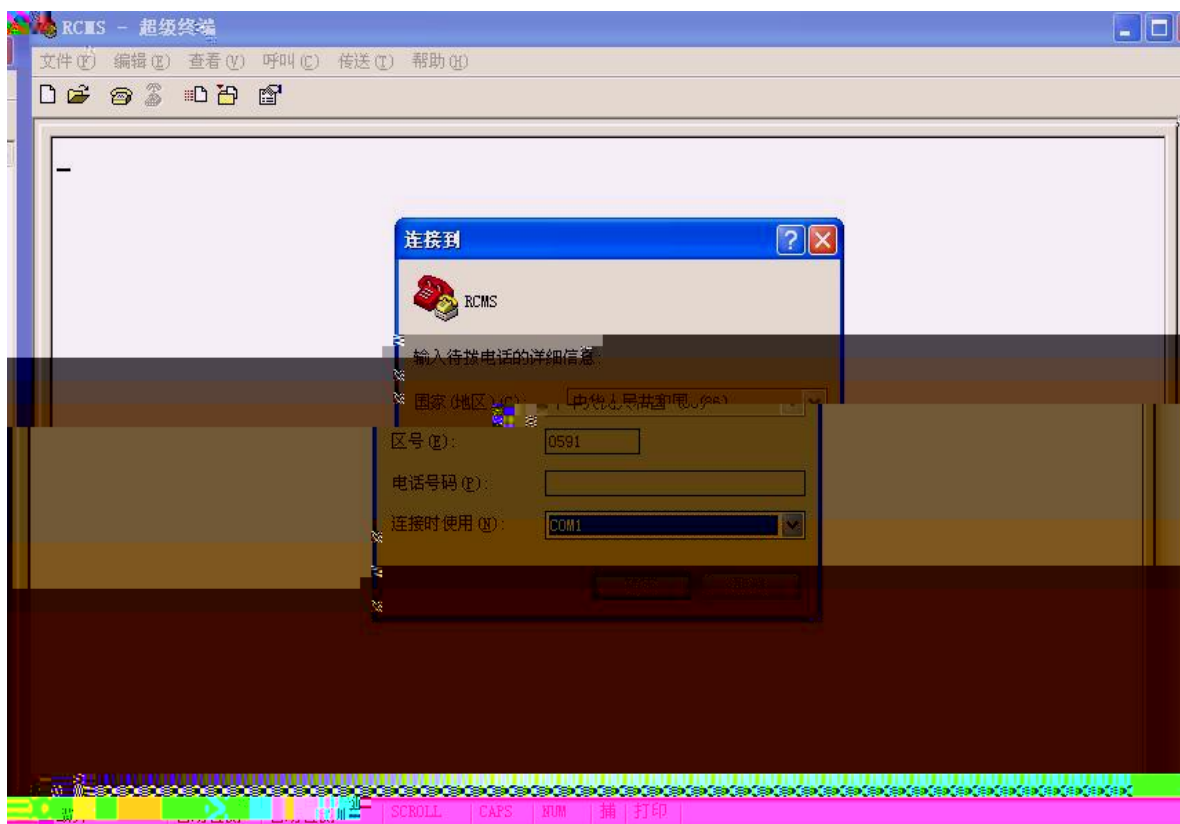
1-3



1-4



1-5



1-6

RCMS	Console	PC
PC	COM1	RCMS
	Console	COM1



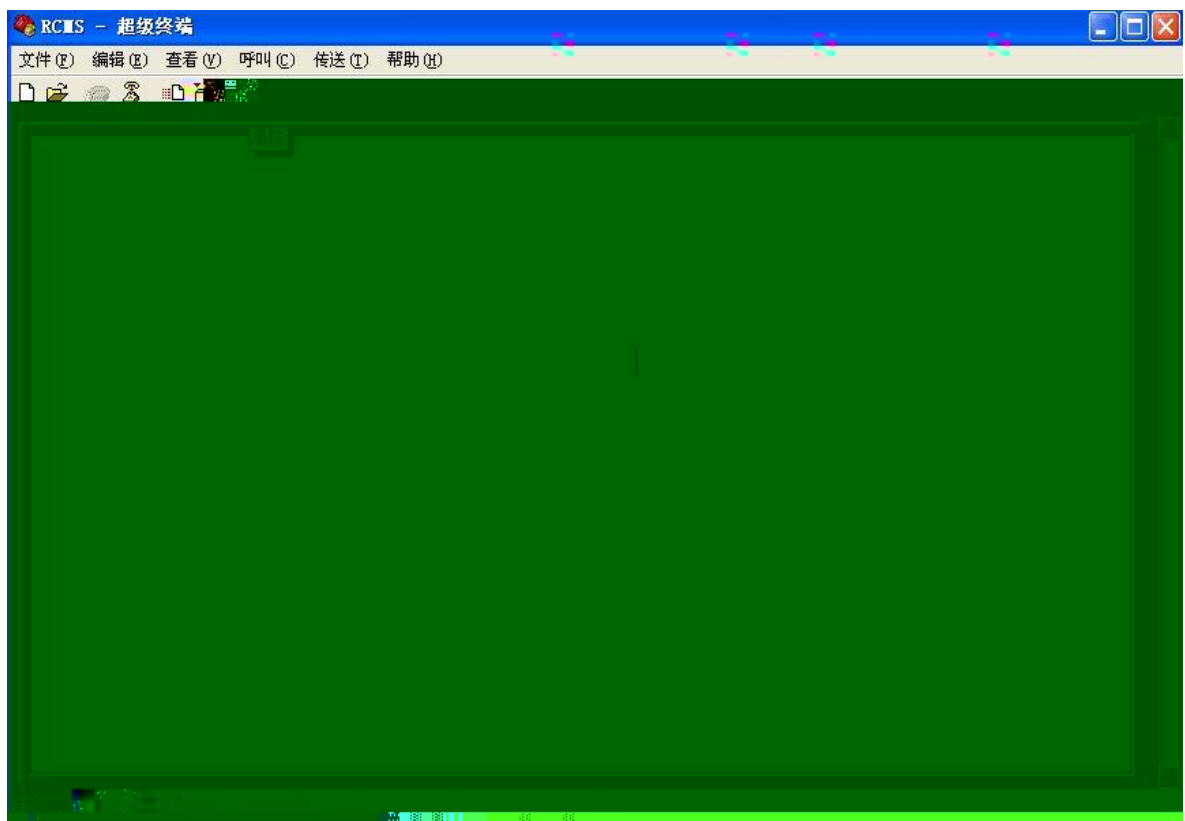
1-7 PC

Console

9600Bit/S

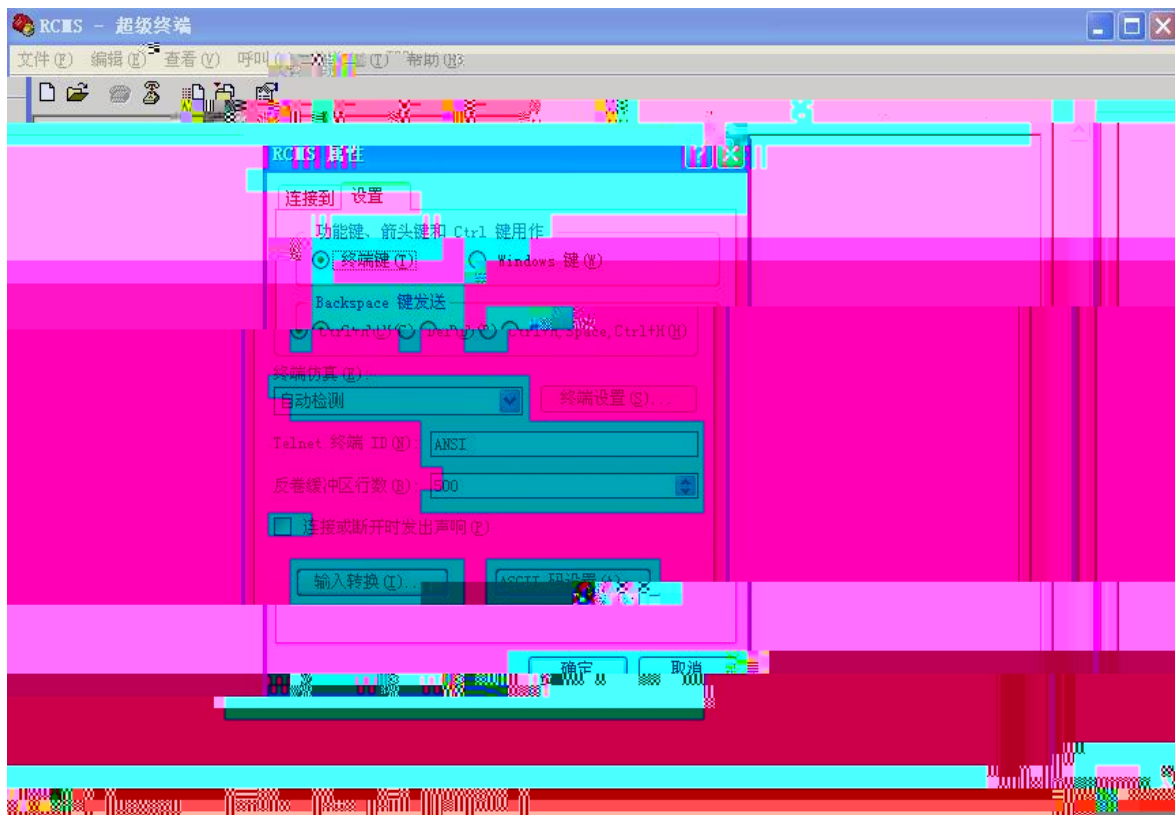
8

1



1-8

com



1-9

ANSI

RCMS

RCMS

1.3 RCMS

1.3.1

RCMS

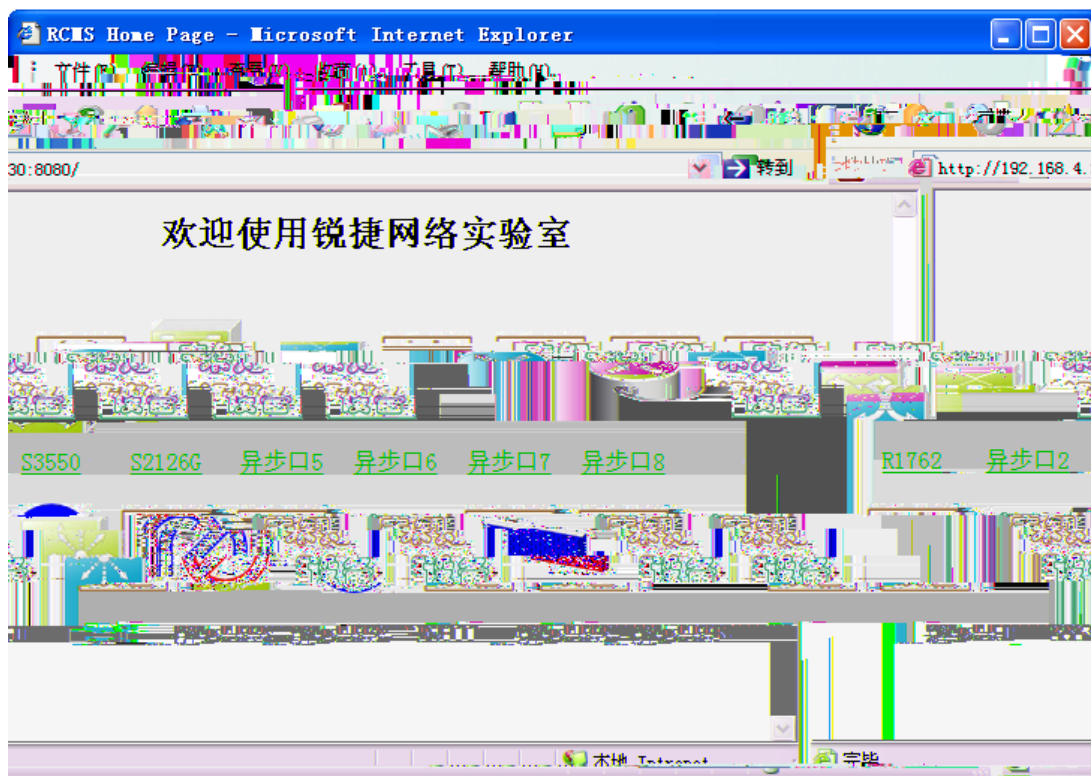
RCMS

RCMS

RCMS

RCMS

1.3.2 RCMS



1 RCMS

RCMS

Telnet

Reverse

Telnet

Reverse Telnet

Reverse Telnet

ip host

1.4.2 RCMS

RCMS

banner incomming

1k

HTML

HTML

HTML

1.4.3

RCMS

IP **ip host**
RCMS

Reverse Telnet

IP m

R3660 Reverse Telnet

2013

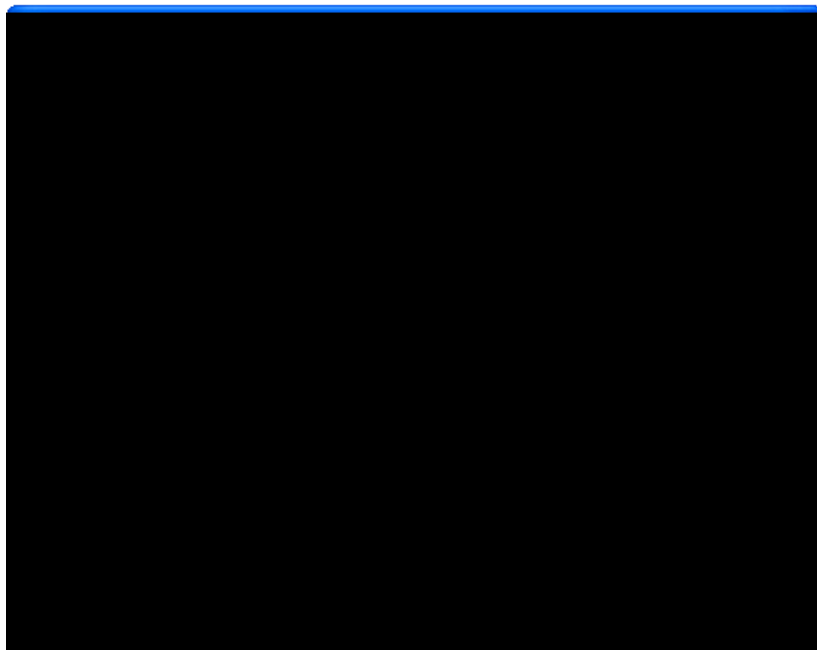
1.4.4

Telnet

Telnet

PC
Options

SecureCRT



3 Telnet

1.5

RCMS

1.5.1

CLI

Red-Giant# execute {{flash:}filename}	
line_rcms_script.text	Reverse

RCMS

IP

192.168.1.1

1 4

RCMS

TTY

login local

AAA

clear line

Reverse Telnet

telnet

Reverse Telnet

enable

password1 ~ password4

delete

reload

y

n

