

# RG-S2600S

copyright © 2022







/

**2.**

# 1

RG-S2600-S


QOS

■ RG-S2600-S

	10/100Base-T	10/100/1000Base-T	1000Base-X SFP	Console
RG-S2628G-S	24	2	2	1
RG-S2652G-S	48	2	2	1

## 1.1 RG-S2628G-S

1

	RG-S2628G-S
CPU	500M
BOOTROM	8M
Flash Memory	128M
SDRAM	DDRII 128MB
	Mini-GBIC-SX Mini-GBIC-LX Mini-GBIC-LH40 Mini-GBIC-ZX50 Mini-GBIC-ZX80 Mini-GBIC-ZX100 1000Base-T Mini-GBIC-GT SFP GE-SFP-STACK1.6M 
SFP	1000Base-X 2.5G AC 100-240V~ 90-264V~ 50/60Hz 0.5A HVDC 192

	10% ~ 90% RH

- 1
- 2 Console
- 3

RG-S2600S

	10% ~ 90% RH
	5% ~ 90% RH
EMI	GB/T 9254.1-2021
	GB 4943.1-2011
× × mm	440 × 260×44
kg	4.2 kg

RG-S2600G-S

A

RG-S2652G-S

48 10/100Base-T

2

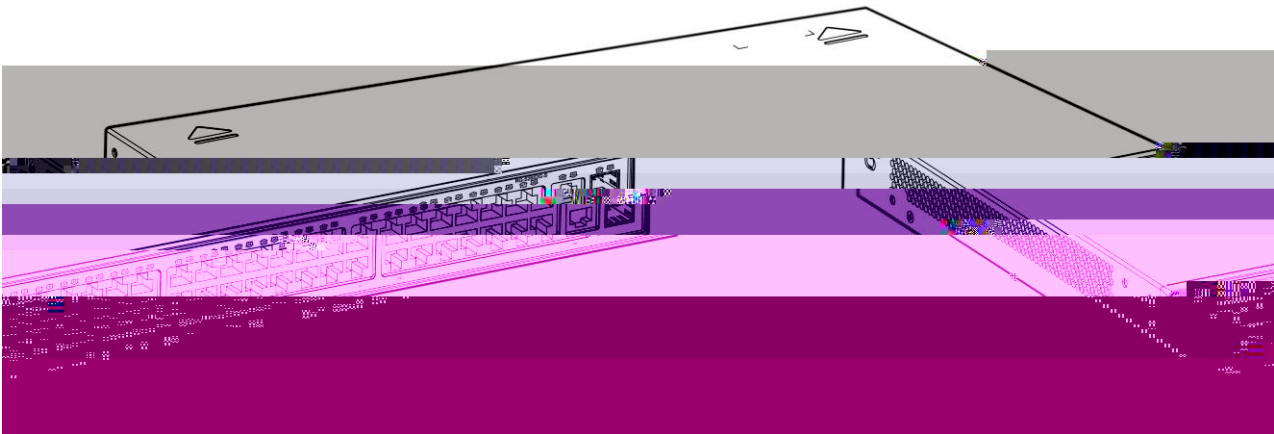
2

SFP

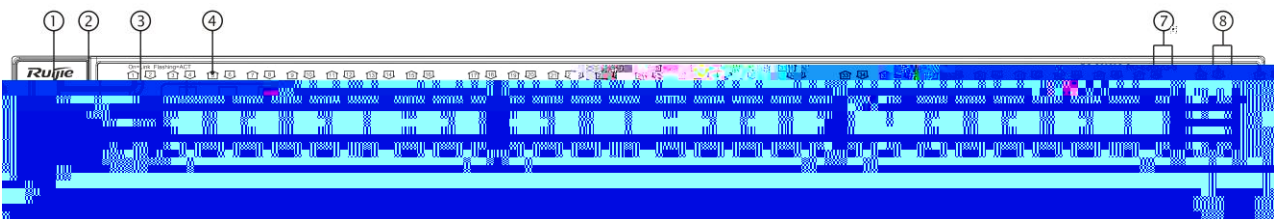
1

Console

1-4 RG-S2652G-S

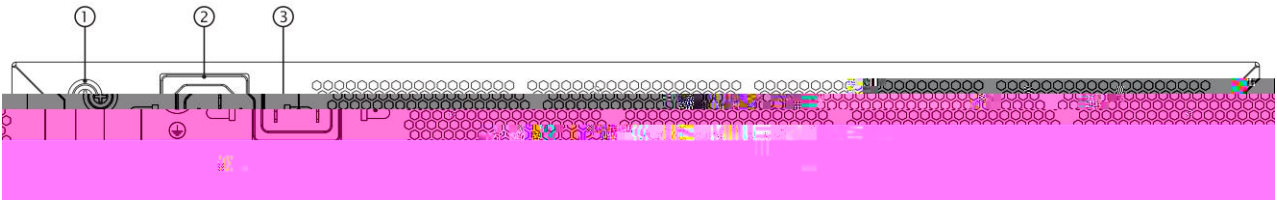


1-5 RG-S2652G-S



1	5	10/100/1000Base-T
2 Console	6	1000Base-X SFP /2.5G
3 10/100Base-T	7	10/100/1000Base-T
4 10/100Base-T	8	1000Base-X SFP

1-6 RG-S2652G-S



1	3
2	

RG-S2652G-S

- AC
  - 100-240V~
  - 90-264V~
  - 50/60Hz
  - 0.6A
  - 10A
- HVDC
  - 192-290VDC
  - 0.2A-0.12A

RG-S2652G-S

10cm

3

	Status		


5w&G-j&fSp6lwHGe&A&V/28wbtG~HfxGg&DMAj&X

## 2

### 2.1



RG-S2600-S



### 2.332.331

- 
- 
- 
- 

50A351



## 2.2.1

RG-S2600



## 2.2.4

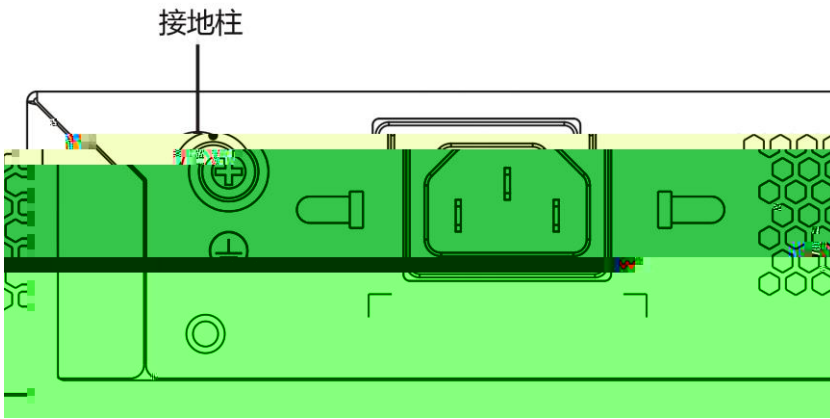
- TN PE
- 
- 
- 

## 2.2.5

RG-S2600-S

---

---



### 2.2.6



### 2.2.7 EMI

- 
- 
- 
-

## 2.4


---

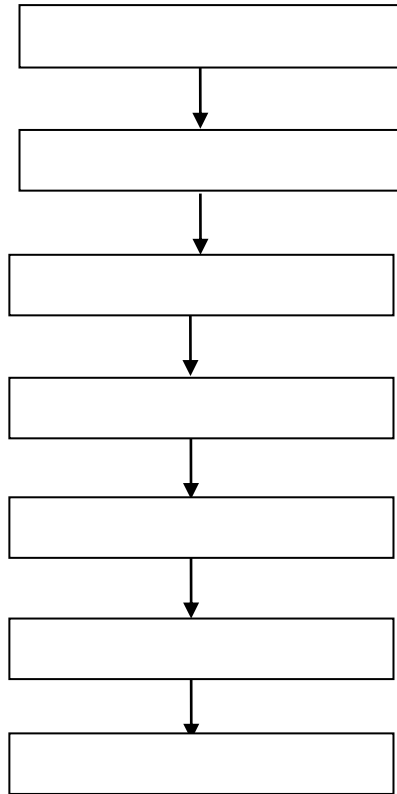
 RG-S2600-S

---

# 3



## 3.1



## 3.2

- 
- 
- 
-

### **3.3      RG-S2600-S**

### 3.3.3

19

- 4
- 

### 3.4

---

---

- 
- 
- 
- 10

## 4

### 4.1







## **5**

### **5.1**

### **5.2**

RJ45	100	

# A

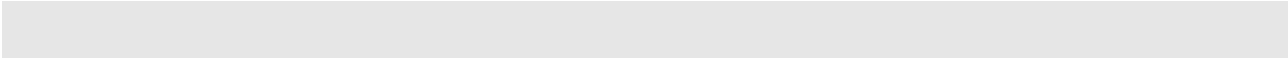
## 1000BASE-T/100BASE-TX/10BASE-T

1000BASE-T/100BASE-TX/10BASE-T

MDI/MDIX

Crossover

1000BASE-



<b>Switch</b>	<b>Switch</b>	<b>Switch</b>	<b>Switch</b>
1 IRD +	1 OTD +	1 IRD +	OTD +
2 IRD -	2 OTD -	2 IRD -	OTD -
3 OTD +	3 IRD +	3 OTD +	3 IRD +
6 OTD -	6 IRD -	6 OTD -	3 IRD +

A-4

A 4

**Switch**

**Switch**

## B Mini-GBIC

SFP SFP Mini-GBIC

### Mini-GBIC SFP

Mini-GBIC(SFP)	(nm)	(μm)	(MHz/km)		(dbm) MAX	(dbm) MAX	
FE-SFP-LX-MM13 10	1310	62.5/125	N/A	2	-14	-14	
FE-SFP-LH15-SM 1310	1310	9/125	N/A	15			

IEEE802.3

# C

- 3.7km 5km 2km
- 3.7km
- 
- 
- 
-