

RSR820

V1.06

2022-06-30

copyright © 2022





/

2.

1

RSR820

32 RISC
RSR820

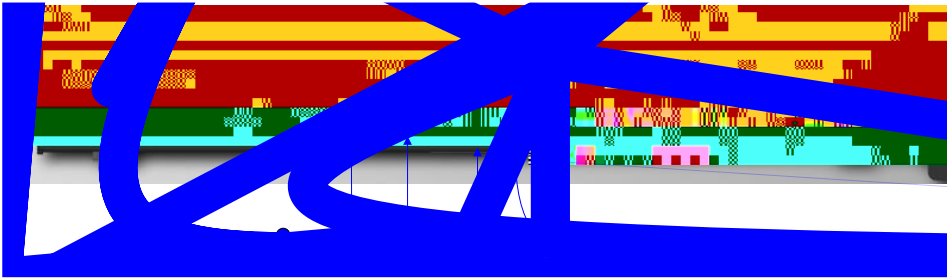
1.1 RSR820

	RSR820
	5

RSR820

1-1

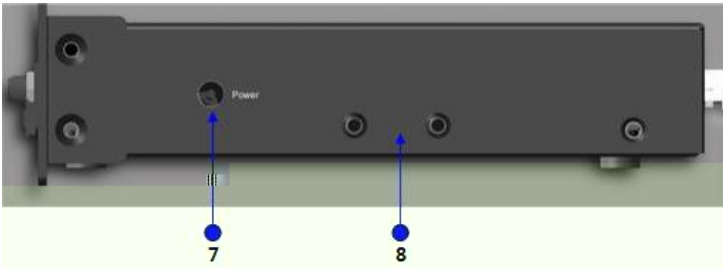
1-1 RSR820



RSR820

1-2

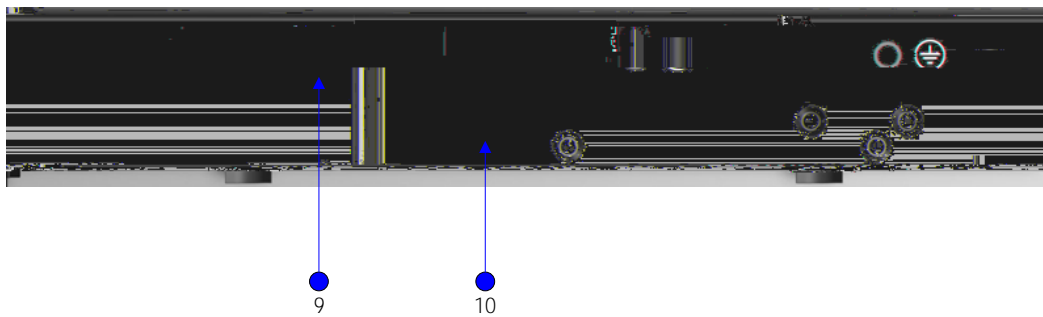
1-2 RSR820



RSR820

1-3

1-3 RSR820




1	FUNC	7
2	SYS	8
3	USB USB	9
4	Console	10
5	GEO	
6	GE 1—4	

RSR820

100 240V 50~60Hz

12V 1.5A

	SYS		
USB			USB
			USB
			USB
	GEO-GE4		link
			link

RSR820

FUNC

FUNC

USB



U

FUNC



U

FUNC

U



U

FUNC

RGOS

1.2 RSR820



: RSR820

1.2.1

- RSR820
- RJ45 ARP 802.1Q
- X.25 HDLC PPP SLIP
- TCP/IP IP ICMP IGMP TCP UDP
- IP RIP V1/V2 OSPF V1/V2
- SNMP
- TELNET TELNET
- DHCP Server DHCP Client DHCP Relay TFTP
- VRRP
- PPPOE
- DNS DDNS
- X-MODEM
- NAT ACL AAA
- IPSEC L2TP PPTP

1.2.2

1.2.3

-
-

1.2.4

- DEBUG
-

-
- SNMP
-

- 1) Console
- 2) TELNET
- 3)

1.2.5

- IP
- AAA RADIUS
- PPP PAP CHAP callback
-
- OSPF RIP V2
- NAT
- IPSEC/IKE
- GRE
- VLAN

1.2.6

- X-MODEM (Windows XP Windows NT UNIX DOS)
Console
- TFTP
- BOOTROM
- U

RSR820

- -10 ~60
- 10%~90%



1.5m

0.4m



2.2.2

(μm)	0.5	1	3	5
()	1.4 \times 10 ⁷	7 \times 10 ⁵	2.4 \times 10 ⁵	1.3 \times 10 ⁵

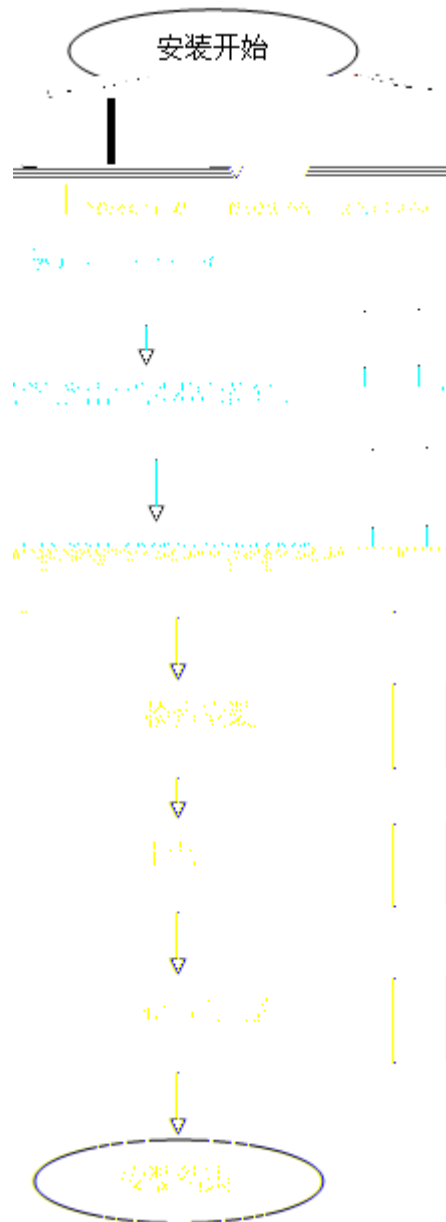
SO₂ H

6)

-
-
-
-

3

3.1



3.2

■

-
-
-

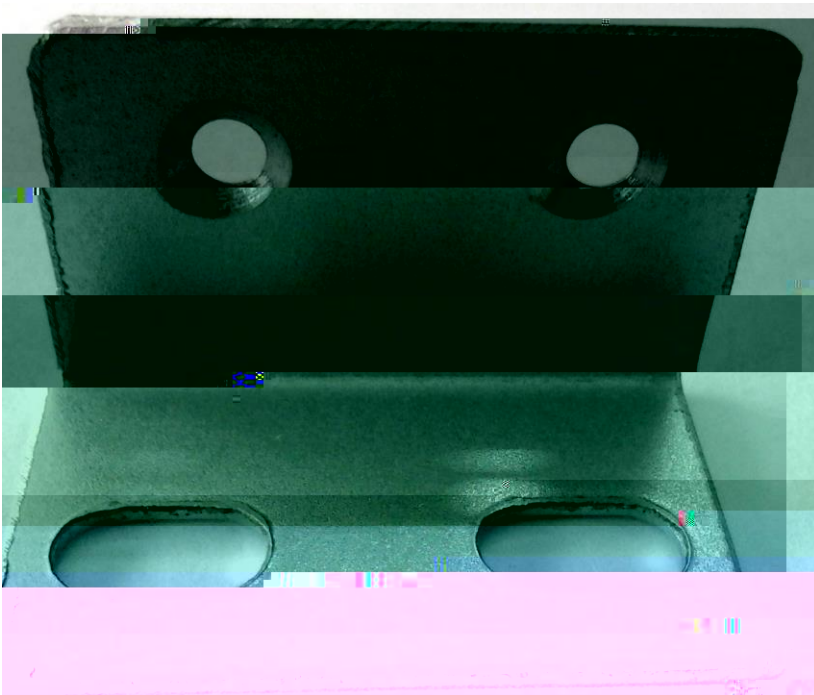
3.2.1

30mm

2

RSR820

3-1 RSR820



3.2.2

RSR820

30mm

2

3-1

3.2.3

19

3.4

EIA/TIA-232

Console

	RJ-45
	EIA/TIA-232
	9600bps
	1
	2

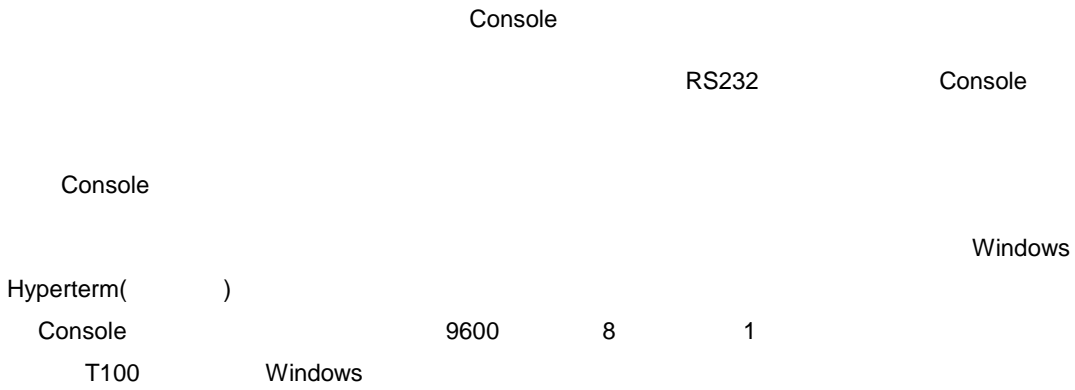
RJ45

DB-9

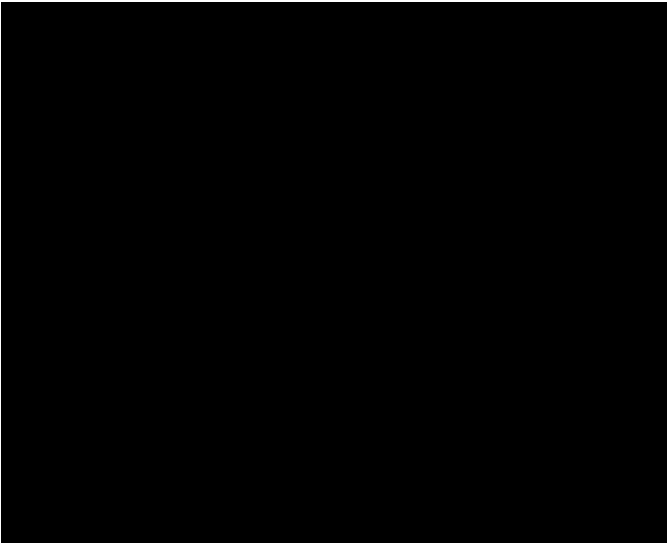
4

4.1

4.1.1



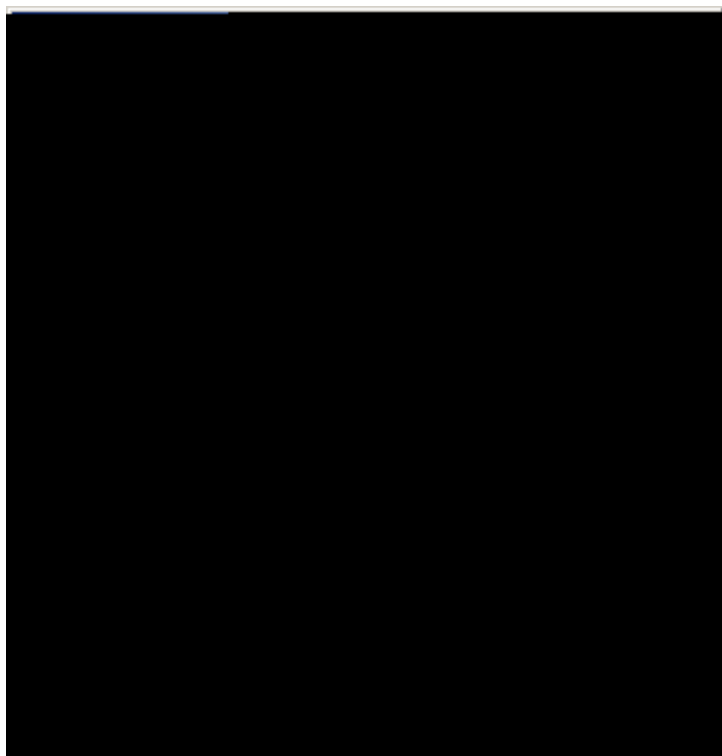
4-1



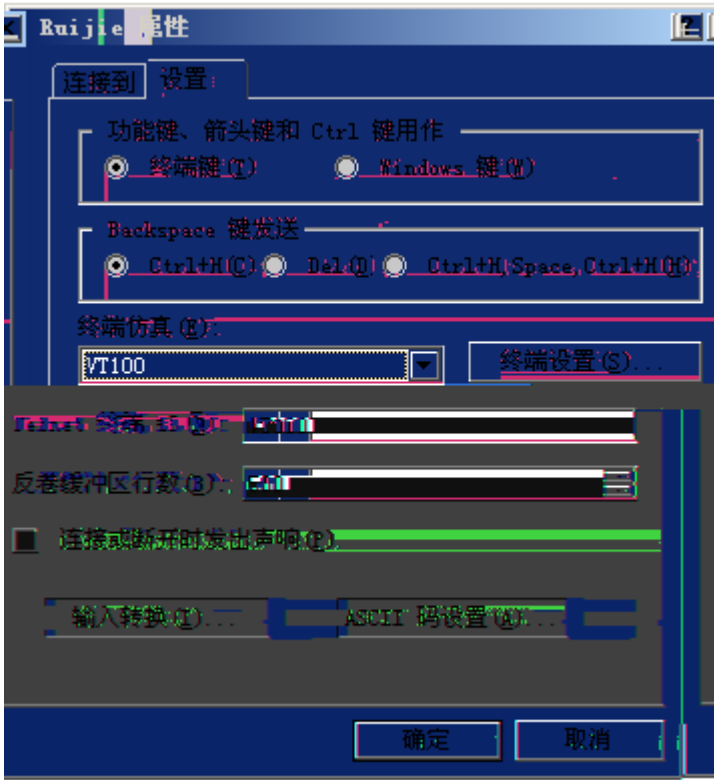
4-2 Console



4-3



4-4



4.2

4.2.1

-
-
-

4.2.2

4.2.3

-

- SYS
-
-

4.2.4

D+aEdXAc44#1E38FCD+cEd036pro1 115.1 572.86 Tm[(-)] TJET EMC /P <</MCID 45>> BDC BT1 0 0 1 118.1 448 pMTD_NAND_FOU

```
System bootstrap ...
Boot Version: RGOS 10.4(3b13) Release(166021)
Nor Flash ID: 0x0102194D, SIZE: 33554432Bytes
MTD_DRIVER-5-MTD_NAND_FOUND: 1 NAND chips(chip size : 134217728) detected
Post-EMC+G main Boot ET.E0 1 83 Tmn3 Tm0 10(ZE:7 61977.02s)-9554433333
Verify the image ..[ok]
Loading main program ...
Loading main program 'rgos.bin'.
```

Copyright (c) 1998-2013s by Ruijie Networks.

All Rights Reserved.

Neither Decompiling Nor Reverse Engineering Shall Be Allowed.

*Jan 1 00:54:20: %MTD_DRIVER-5-MTD_NAND_FOUND: 1 NAND chips(chip size : 134217728) detected

*Jan 1 00:54:38: %DEVICE-5-CHANGED: Device RSR820 (1) changed state to up.

*Jan 1 00:54:38: %USB-5-MODEM_FOUND: Modem <XXXX> bind with tty 1.

*Jan 1 00:55:24: %SYS-5-WARMSTART: System coldstart.



4.3

5

5.1

RSR820

SYS

-
-
-
-

SYS

5.2

-
-
-
-

1

VT100

9600

8



A

1000BASE-T/100BASE-TX/10BASE-T

1000BASE-T/100BASE-TX/10BASE-T

MDI/MDIX

Crossover

1000BASE-T	IEEE 802.3ab		100-ohm 5	5	UTP	STP
	100	1000BASE-T	4		4	
1000BASE-T						
A						

