

RG-ULB111

copyright © 2019





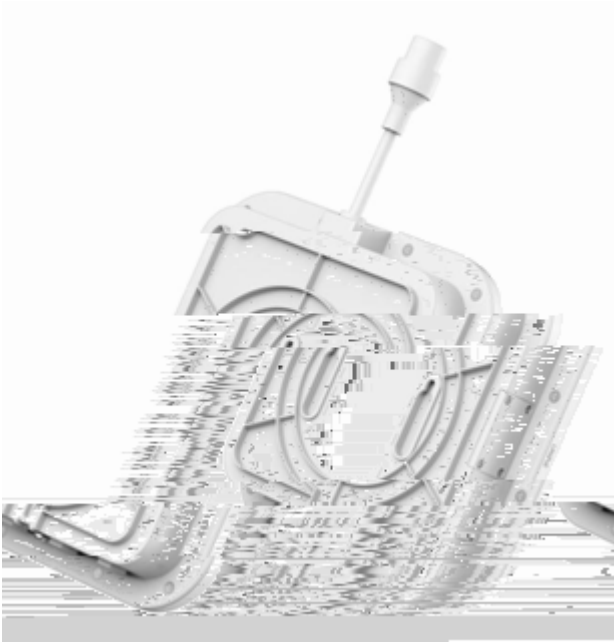


	< -41.3dBm/MHz
	-92dBm/500MHz@6.8Mbps

### 1.2.1.1 RG-ULB111

RG-ULB111 1

1-1 RG-ULB111



### 1.2.1.2 RG-ULB111

RG-ULB111

logo

1-1 LED

-		
	1	
	5	down

## 2

### 2.1

RG-ULB111

---



---

### 2.2

500m  
IP65  
30cm

### 2.3

-20 70  
-40 +85  
0% 100%

### 2.4

>

NH

### 3



#### 3.1



#### 3.2

## **3.3**

### **3.3.1**

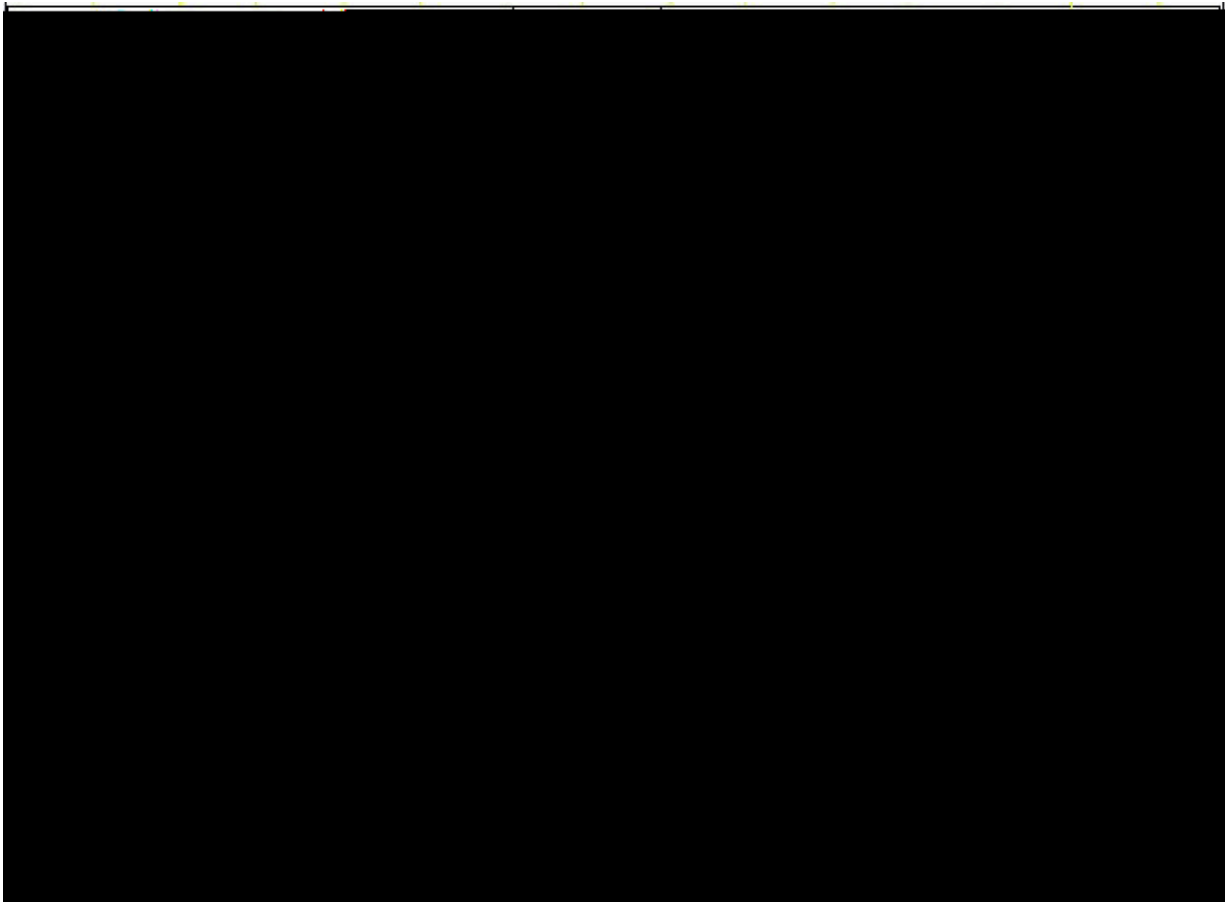
1.

2.

3.

4.

3-1

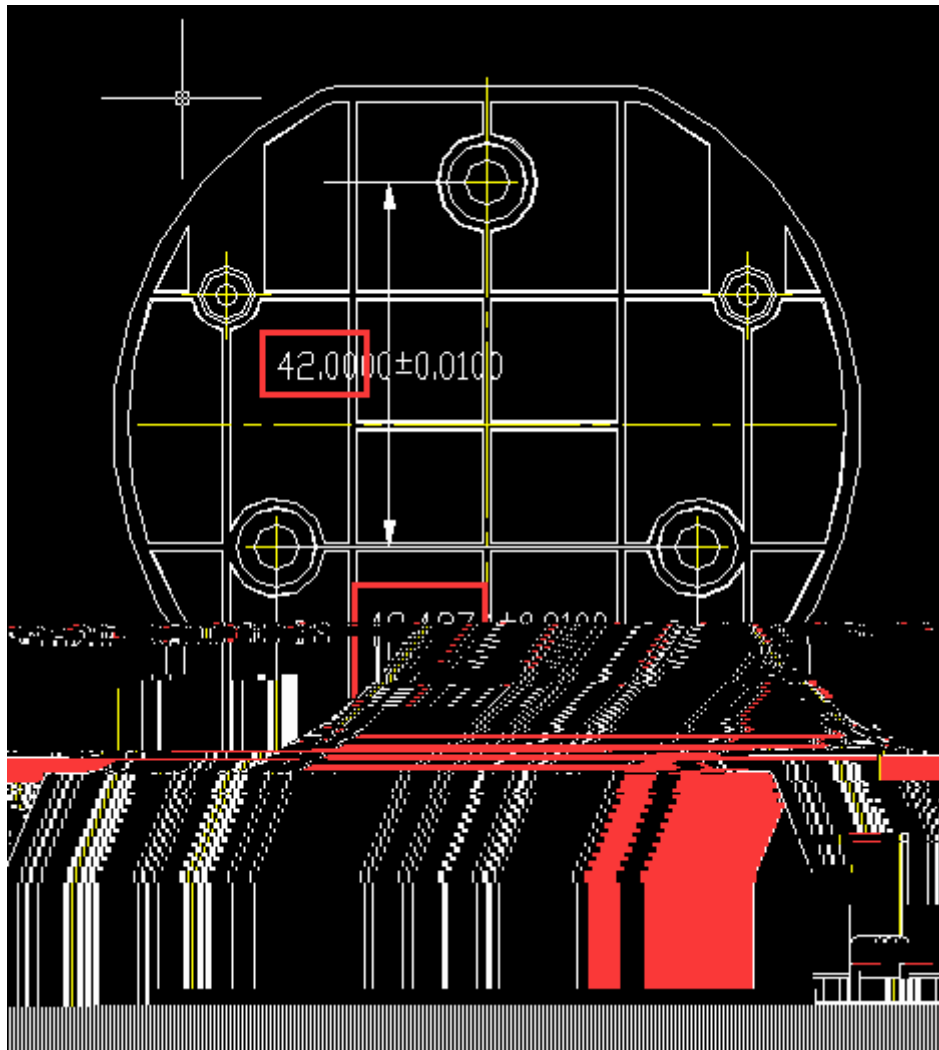


3  
42mm

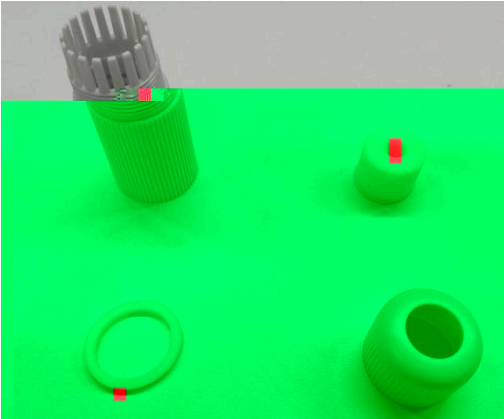
6mm

48.5mm

3-2

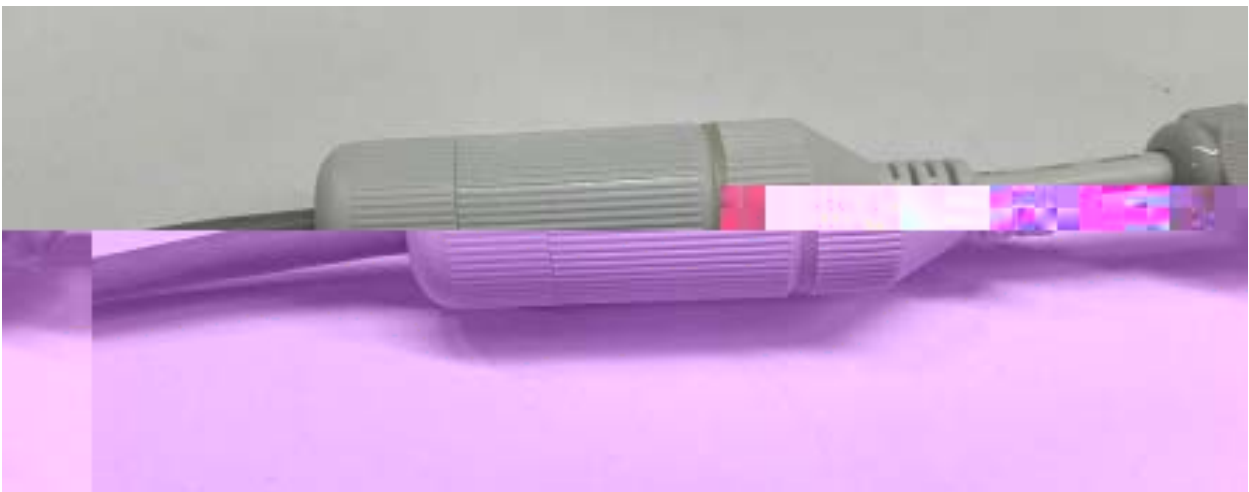


3-4





3-8



# 4

## 4.1

PoE      RG-ULB111

## 4.2

### 4.2.1

PoE      RG-ULB111

### 4.2.2

# 5

## 5.1

	—	link
	—	
1s	—	
5s	—	

## 5.2

RG-ULB111

## 5.3

RG-ULB111

1)

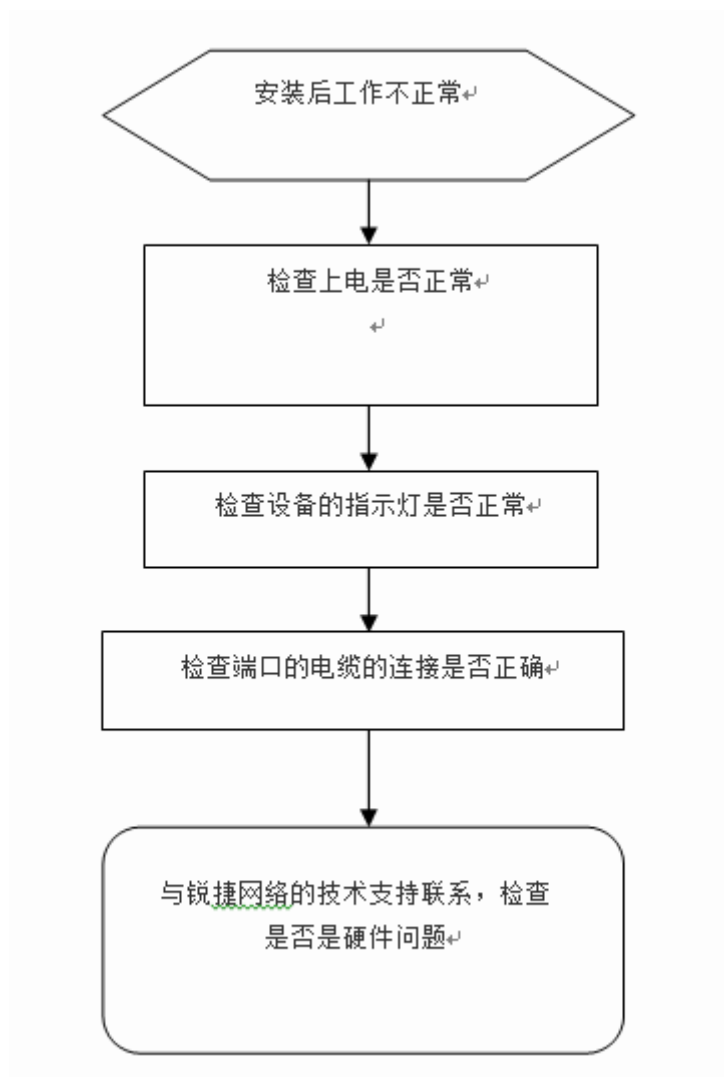
2)

3)



## 6

### 6.1



### 6.2

1

2