



RG-WALL 1600-X8600

V1.2

©2014

1

1

7× 24

<http://www.ruijie.com.cn/>

<http://webchat.ruijie.com.cn>

<http://www.ruijie.com.cn/service.aspx>

4008-111-000

<http://support.ruijie.com.cn>

service@ruijie.com.cn

1

RG-WALL 1600-X8600			20Gbps
8 SFP RJ 45			
	RG-WALL 1600-X8600	128G	WAN

RG-WALL 1600-X8600

1.1 RG-WALL 1600-X8600

	RG-WALL 1600-X8600

LL 1600-X8600

LL 1600-X8600

1-2

1~7

RG-WALL 1600-X8600

#				
1	USB	USB-A	USB	USB Key Modem
2	USB MGMT			

2

2.1

RG-WALL 1600-X8600

2.1.1

2.1.2

2.1.3

2.1.4

RG-WALL 1600-X8600

RG-WALL 1600-X8600

1~10

3.8

2.1.5

RG-

2.2.3

RG-WALL 1600-X8600

RG-WALL 1600-X8600

0°C-40°C		20%-90%	
		1.5M	0.4M

2.2.4

{	0.5	1	3	5
/	1.4 x 10	7 x 10	2.4 x 10	1.3 x 10

RG-WALL 1600-X8600

	mg/m ³	mg/m ³
	0.2	1.5
	0.006	0.03
	0.04	0.15
	0.05	0.15
	0.01	0.3

2.2.5

RG-WALL 1600-X8600

RG-WALL 1600-X8600

100-240 VAC, 47-63 Hz

2.2.6

RG-WALL 1600-X8600

2.2.7 EMI

2.3

2.4

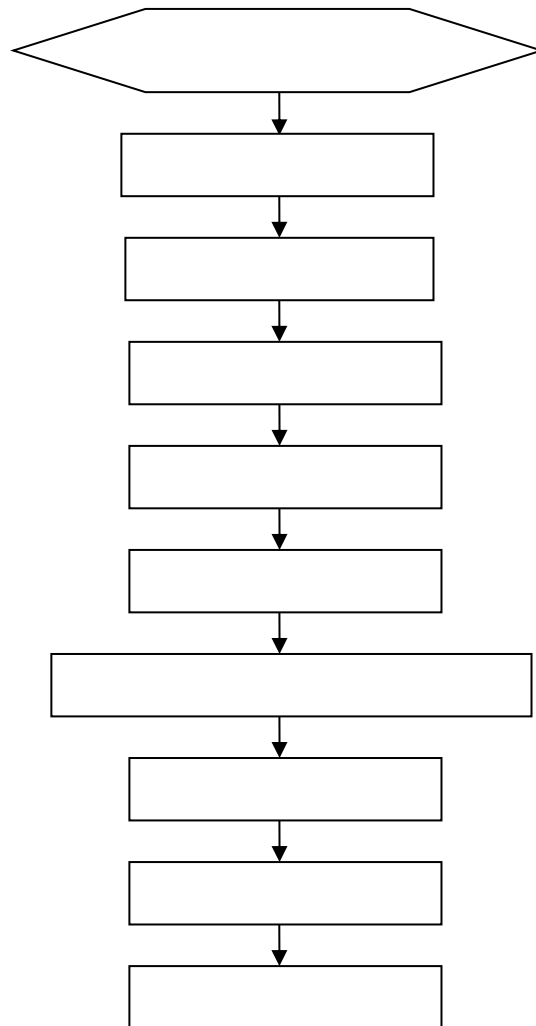
RG-WALL 1600-X8600

2.5

	2	USB	Console	12	4
--	---	-----	---------	----	---

3

3.1



3.2

3.3

- 10) ÜR Í ÜR Í
- 11) ÜR Í Ê
- 12) ÜR Í
- 13)

3.7

- 14)
- 15)
- 16)

3.8

3.9

SFP+/SFP

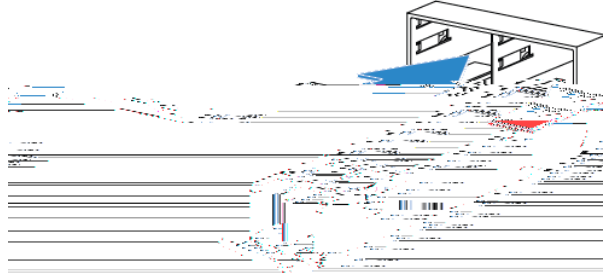
XFP/SFP+/SFP

SFP+/SFP

- 17)
- 18) ÛÛÉÛÛ

19) ΗΪ

- 1.
- 2. SFP
- 3.
- 4. SFP
SFP



3-7

- 5.
- 6.

SFP+/SFP

SFP+/SFP

SFP+

SFP+		SFP+	SFP+
20)			
21)	ΰΰΰ		
22)	ΰΰΰ		ΰΰΰ
SFP+			8

3.10

SFP+/SFP

SFP+/SFP	
23)	
24)	ΰΰΰΰΰ
25)	

26)

27)

SFP+/SFP

SFP+

SFP+

28)

29)

ÙøúÉ

ÙøúÉ

ÙøúÉ

SFP+

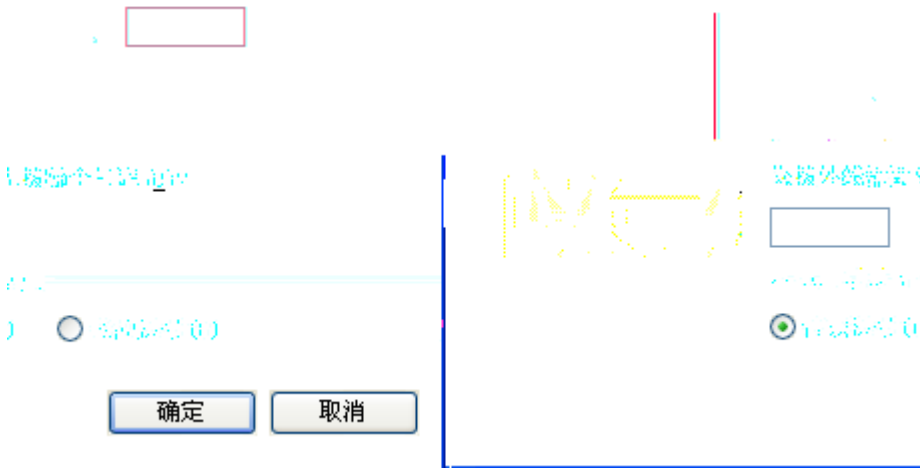
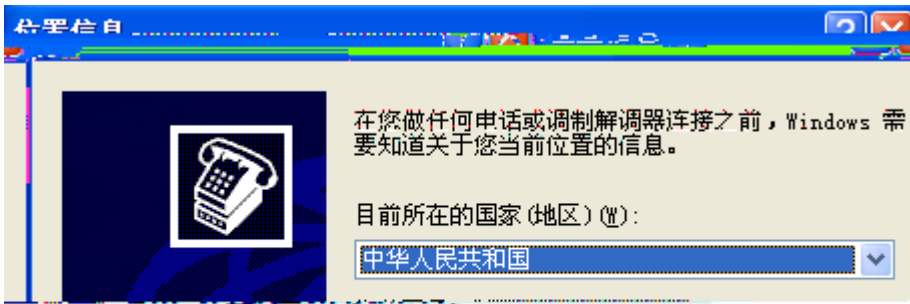
8

4

4.1

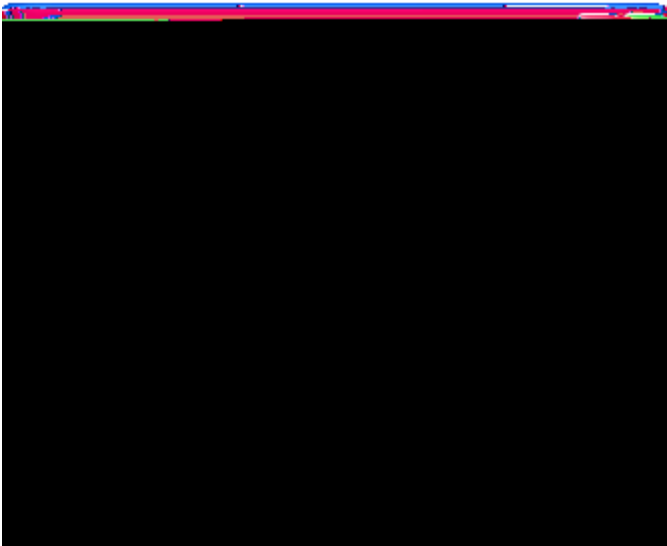
PC	Console	PC	PC	Windows3.1	Terminal	Windows 95/98/NT/2000/XP
30)	ÖÓË			9600	8	1
31)	ÛR Í					
32)	%o +þ%o +þ%o +þ%o +þ%o +					I ËG

4-1



33) %o +þ

4-2

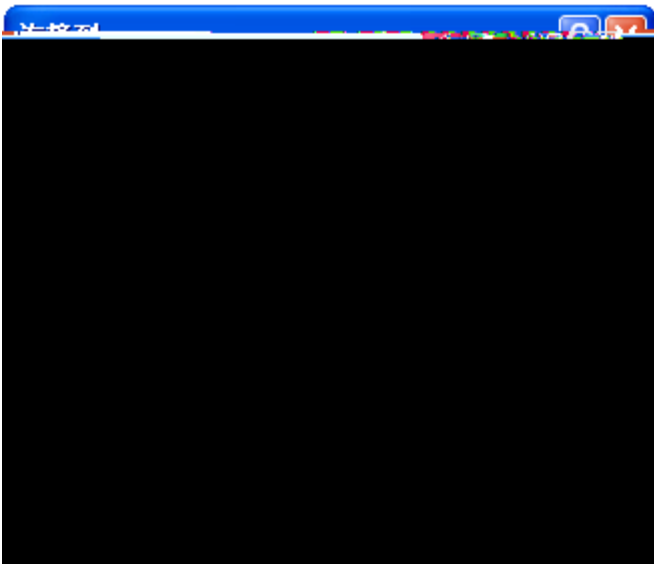


34)

Ł N

I Ę

4-3



35) Ę

ì

Ł N

F

I Ę

Jî €

4-4

36)

Ł N

I Ę

ÚÔ
Ë

Ô[]•[]

Ô[]•[]

Á

4-9

HJ Á
I €

" "

" "

Ł N

4-10



4-11

4.2

PC

5

5.1

RG-WALL 1600-X8600

5-1 RG-WALL 1600-X8600

#	LED		
1	Logo		
2	STATUS		
3	ALARM		
4	POWER		
5	HA		HA
			HA
			HA
6			/
6			1Gbp

RG-WALL 1600-X8600

RG-WALL 1600-X8600 Internet

Telnet

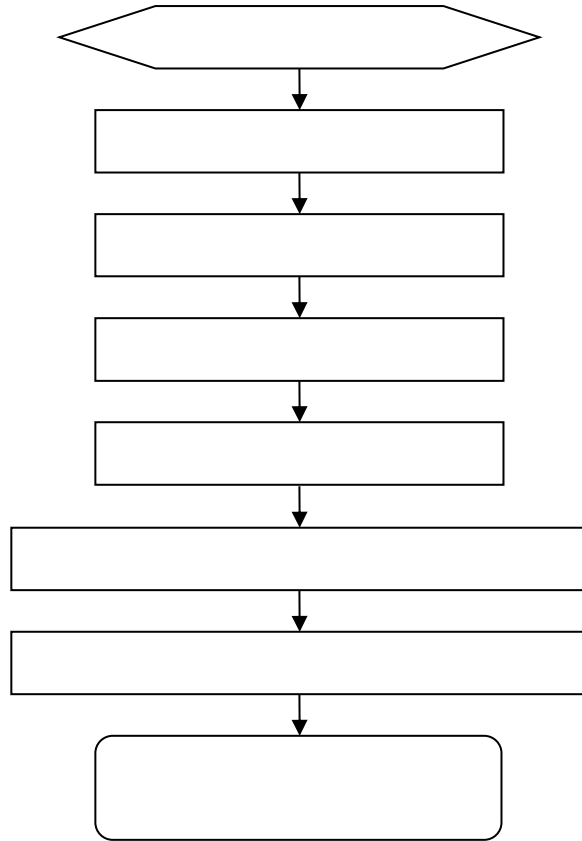
RG-WALL 1600-X8600

RG-WALL 1600-X8600

5.2

6

6.1



6.2

1

2

Status

Power

3

4

5 **link**

link

1

2

1310nm

1550nm

3

4

A —

1000BASE-T/100BASE-TX/10BASE-T

1000BASE-T/100BASE-TX/10BASE-T

MDI/MDIX Crossover

1000BASE-T	IEEE 802.3ab	1000BASE-T	4	100-ohm 5	5	UTP	4	STP	1000BASE-
T	100								
A-1 1000BASE-T									

100BASE-TX/10BASE-T

A 4



B —

RG-WALL 1600-X8600

19

7

5

7

10

SFP+

5

10

25

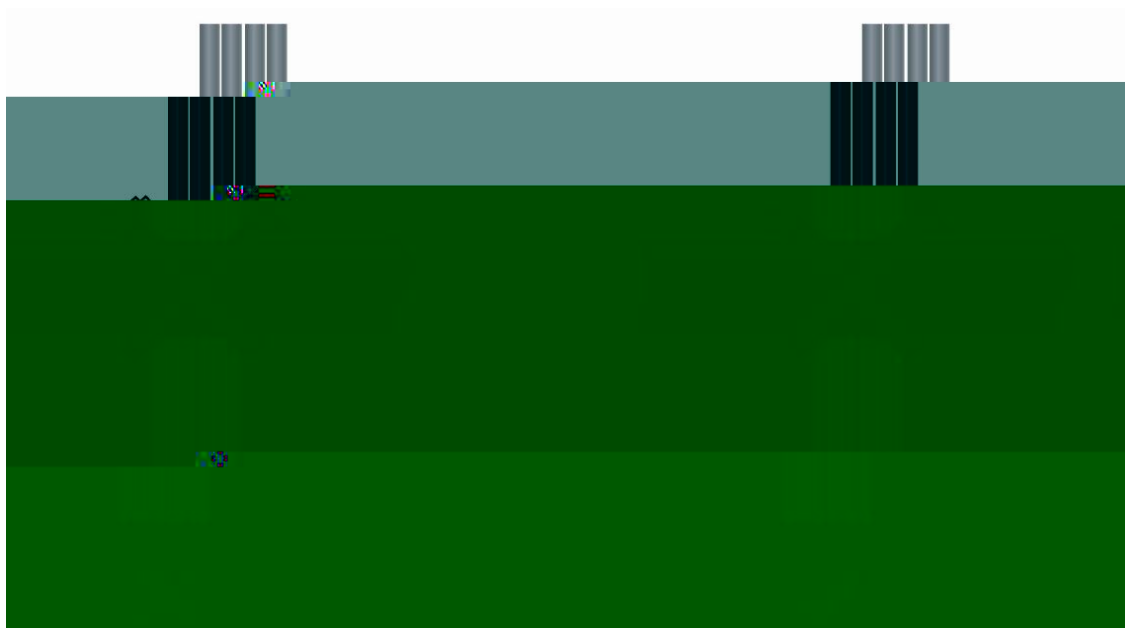
20

10

D-1

D-1

30mm



D-3

D-3

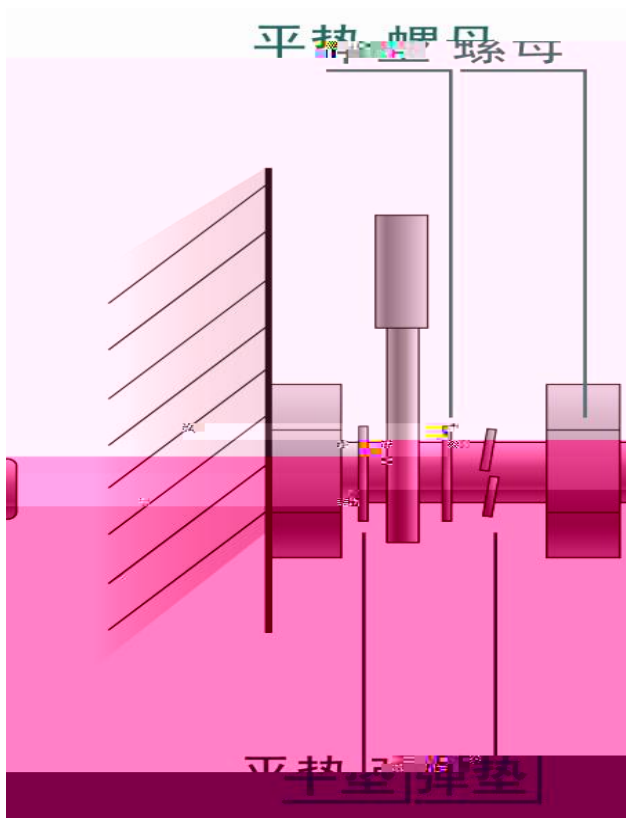


220V

-48V

D-4

D-4



mm	mm
10	80~150
10~30	150~200
30	200~300