

RG-S2928G-S

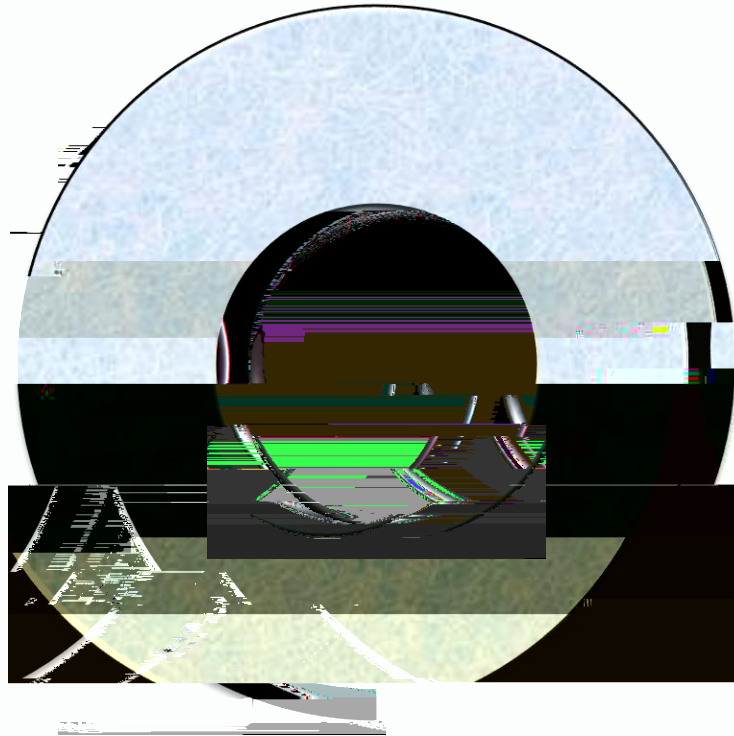


Contents

1	Introduction
2	Network Architecture
3	Network Security
4	Network Performance
5	Network Management
6	Network Troubleshooting
7	Network Design
8	Network Implementation
9	Network Maintenance
10	Network Upgrade
11	Network Migration
12	Network Integration
13	Network Optimization
14	Network Expansion
15	Network Consolidation
16	Network Decommissioning
17	Network Archiving
18	Network Backup
19	Network Recovery
20	Network Disaster Recovery
21	Network Business Continuity
22	Network Compliance
23	Network Auditing
24	Network Reporting
25	Network Documentation
26	Network Training
27	Network Certification
28	Network Accreditation
29	Network Accreditation
30	Network Accreditation




RG-S2928G-S

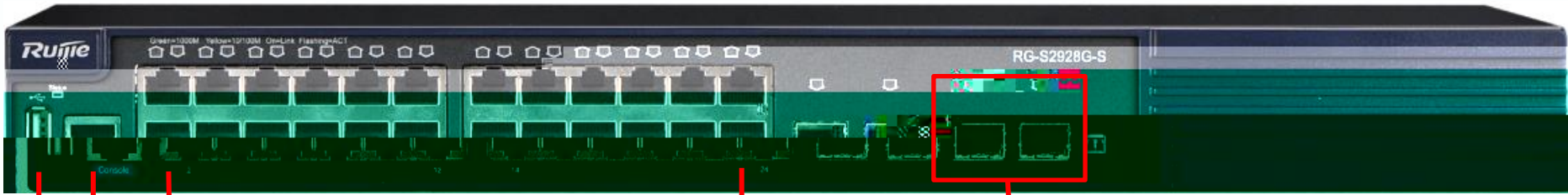


USB2.0
CLI Web
SNMP

A solid red rectangular bar located to the left of the "Contents" text.

Contents

A very faint and illegible table of contents is visible in the center of the page. It appears to be a list of items with corresponding page numbers, but the text is too light to read. The layout suggests a standard table of contents structure with a header, a list of items, and a total page count at the bottom.



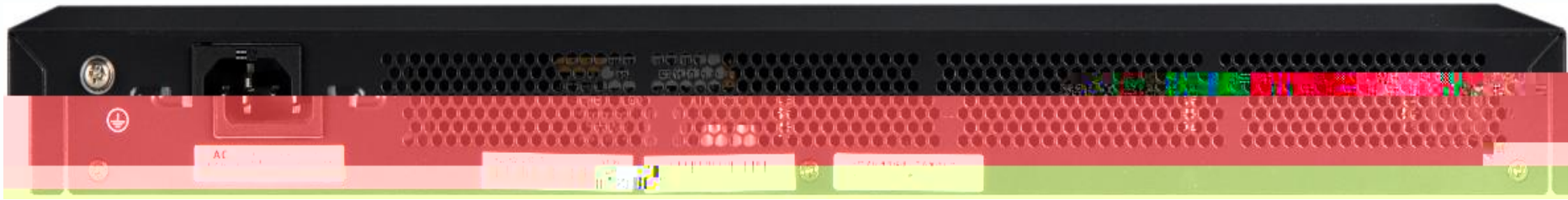
Console

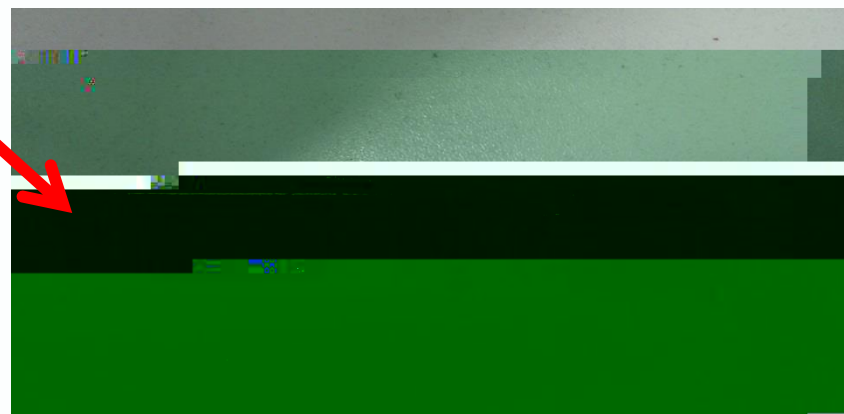
24 10/100/1000M

USB FAT U U

9600bps

2



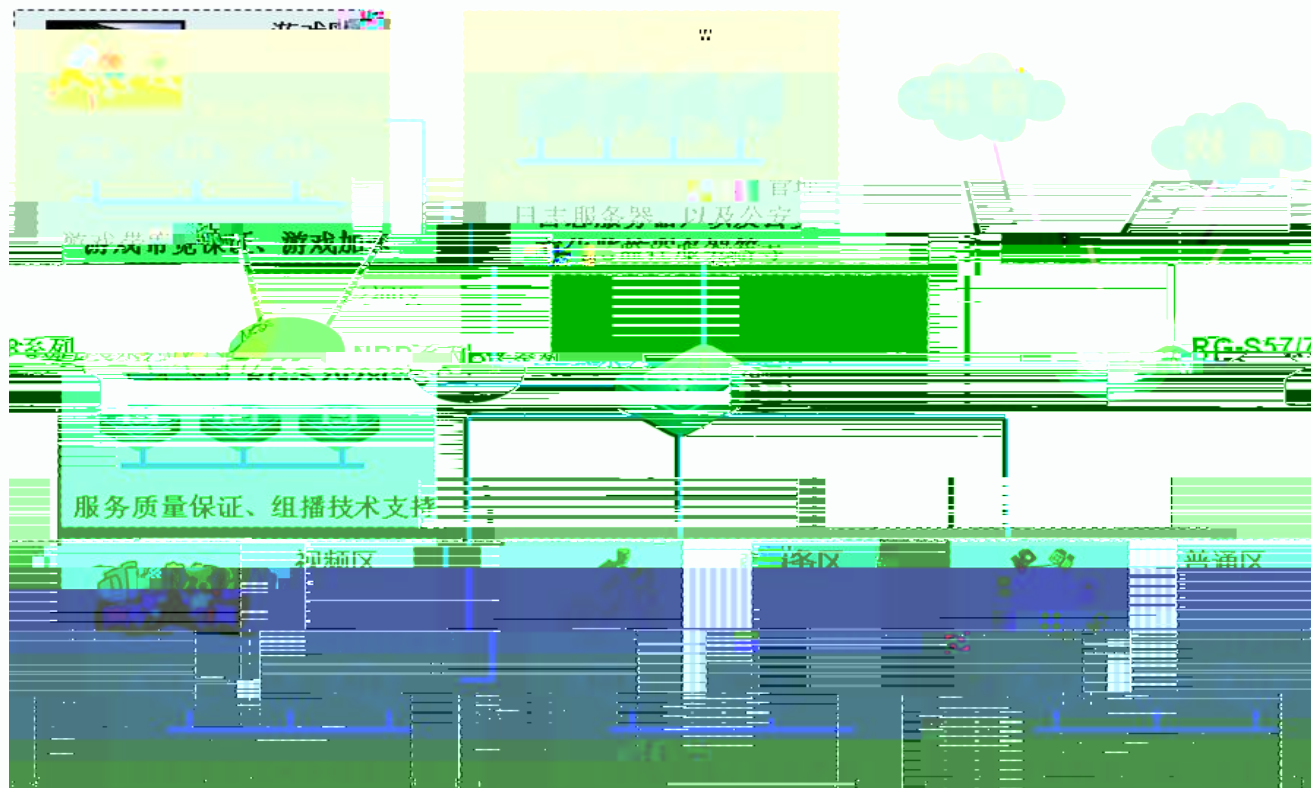


1.6 SFP
RG-S2928G-S 27F,28F

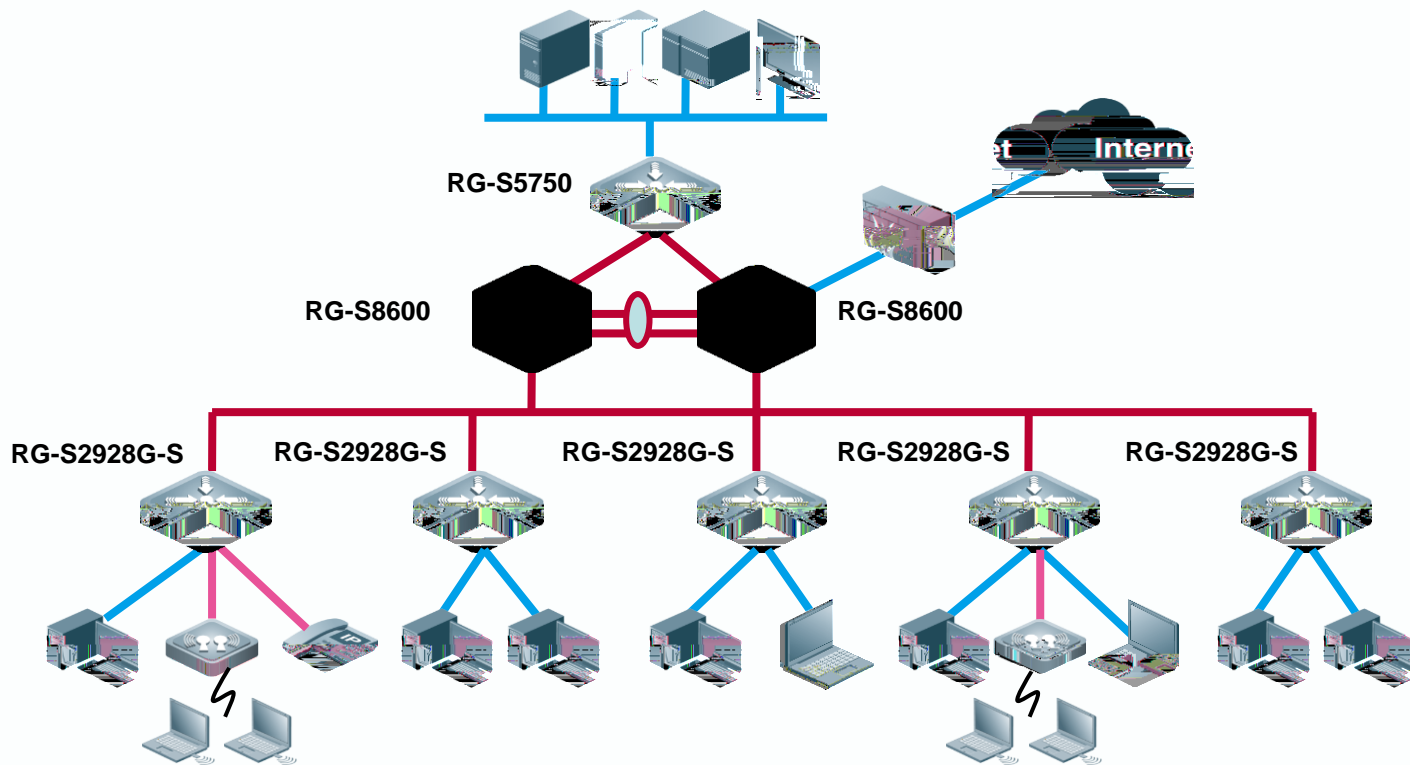
5G

SFP





web



ACL IP+MAC)

SNMP Telnet

